

Virginia Homes

Building Systems

Cape





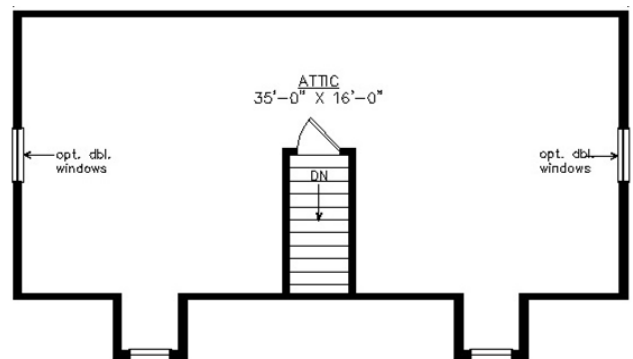
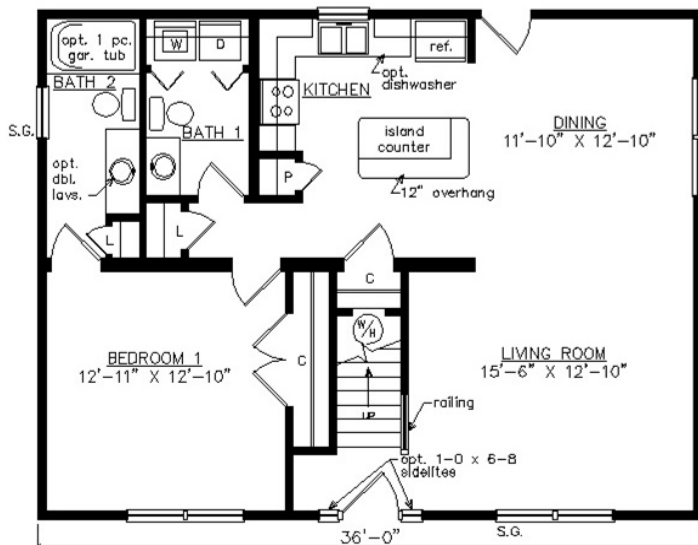
SHENANDOAH CAPE

27'6" x 36'

990 SQ. FT. (FINISHED) / 576 SQ. FT. (UNFINISHED)

BEDROOMS: 1 BATHS: 1.5

SHOWN WITH OPTIONAL STOOP,
FANLITE DOOR AND DORMERS



Virginia Homes
Building Systems

www.virginiahomesbuildingsystems.com

A Division of Modular Building Systems of PA



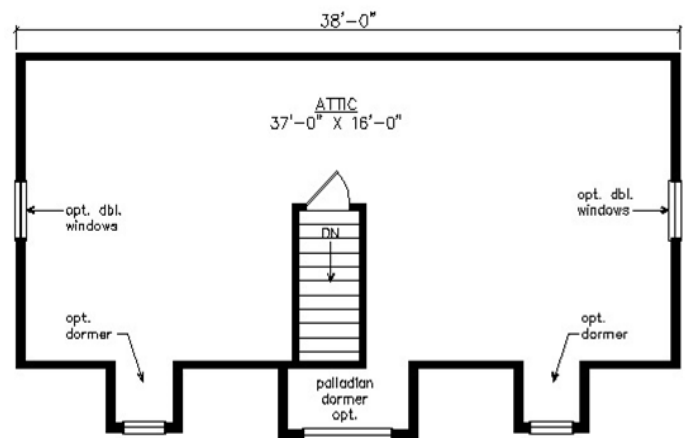
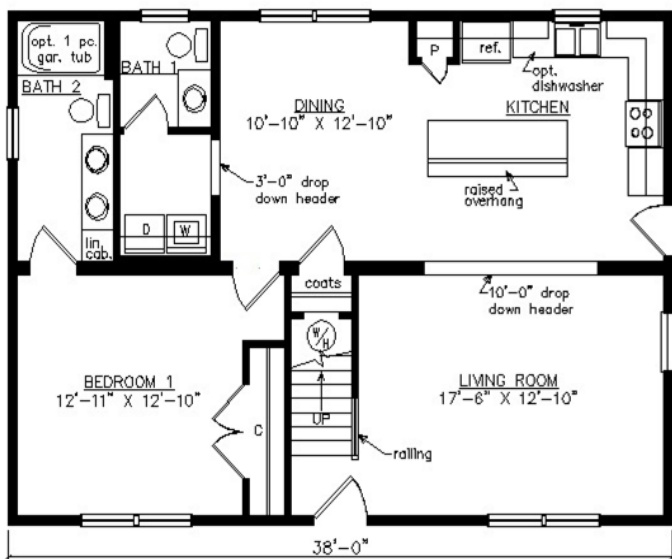
PITTSYLVANIA CAPE

27'6" x 38'

1045 SQ. FT. (FINISHED) / 608 SQ. FT. (UNFINISHED)

BEDROOMS: 1 BATHS: 1.5

SHOWN WITH OPTIONAL PORCH,
FANLITE DOOR AND DORMERS



Virginia Homes
Building Systems

www.virginiahomesbuildingsystems.com

A Division of Modular Building Systems of PA



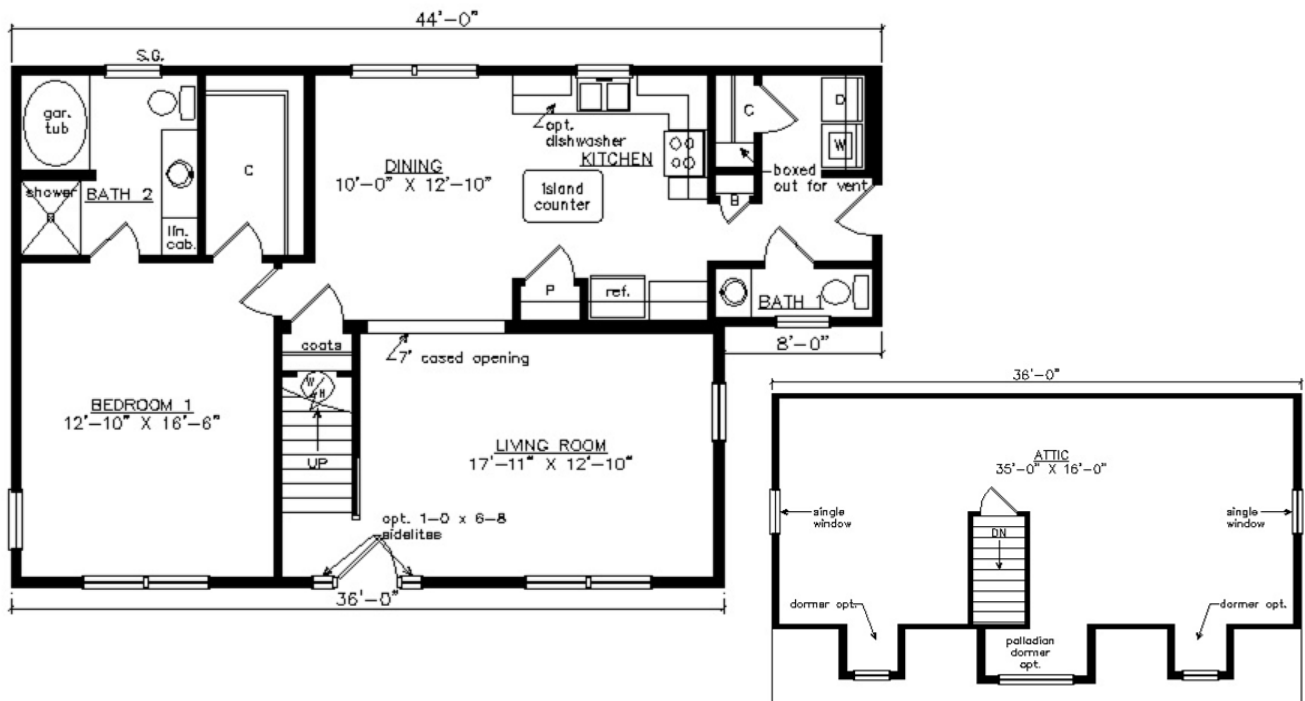
OXFORD CAPE

27'6" x 44'

1100 SQ. FT. (FINISHED) / 576 SQ. FT. (UNFINISHED)

BEDROOMS: 1 BATHS: 1.5

SHOWN WITH OPTIONAL PORCH,
FANLITE DOOR, DOOR SIDELITES AND DORMERS



Virginia Homes
Building Systems

www.virginiahomesbuildingsystems.com

A Division of Modular Building Systems of PA



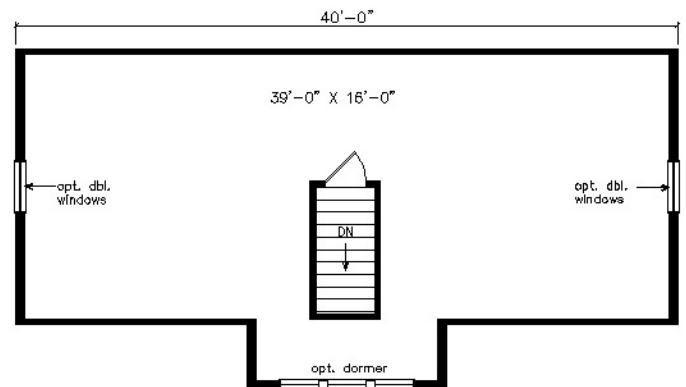
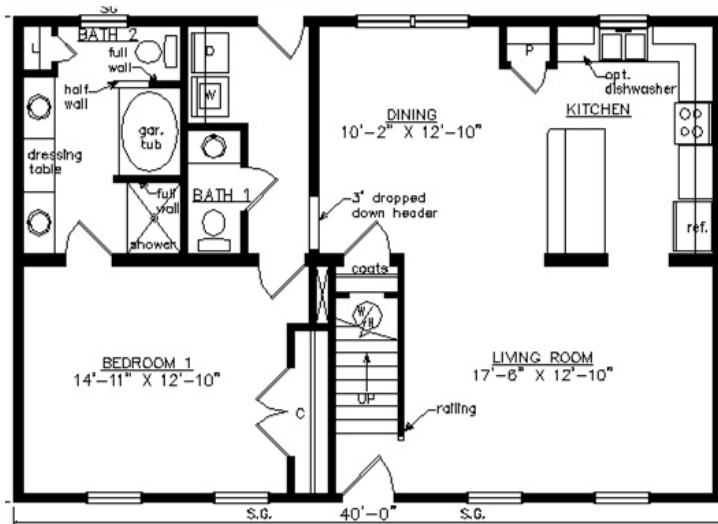
MIDLOTHIAN CAPE

27'6" x 40'

1100 SQ. FT. (FINISHED) / 640 SQ. FT. (UNFINISHED)

BEDROOMS: 1 BATHS: 1.5

SHOWN WITH OPTIONAL PORCH, CRAFTSMAN WINDOWS,
CRAFTSMAN DOOR AND DORMER



Virginia Homes
Building Systems

www.virginiahomesbuildingsystems.com

A Division of Modular Building Systems of PA



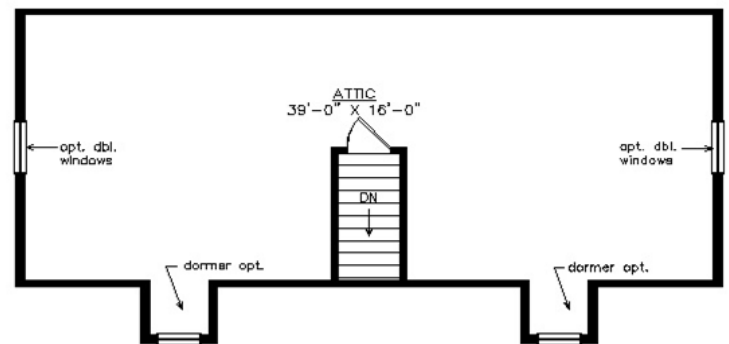
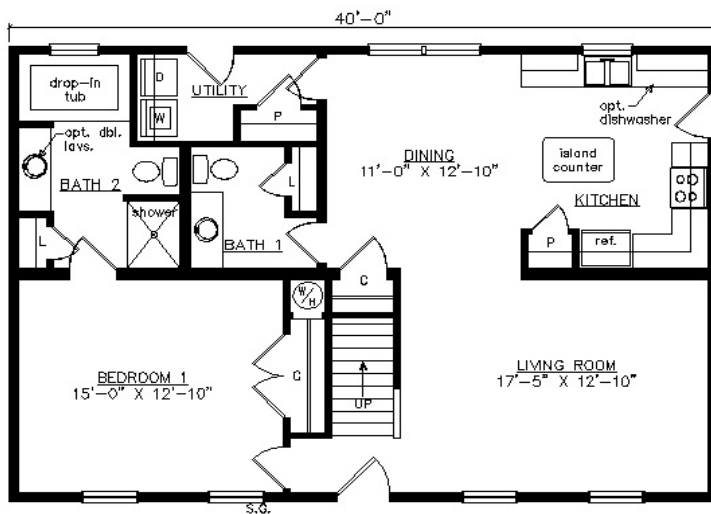
WEDGEPORT I CAPE

27'6" x 40'

1100 SQ. FT. (FINISHED) / 640 SQ. FT. (UNFINISHED)

BEDROOMS: 1 BATHS: 1.5

SHOWN WITH OPTIONAL PORCH,
FANLITE DOOR AND DORMERS



Virginia Homes
Building Systems

www.virginiahomesbuildingsystems.com

A Division of Modular Building Systems of PA



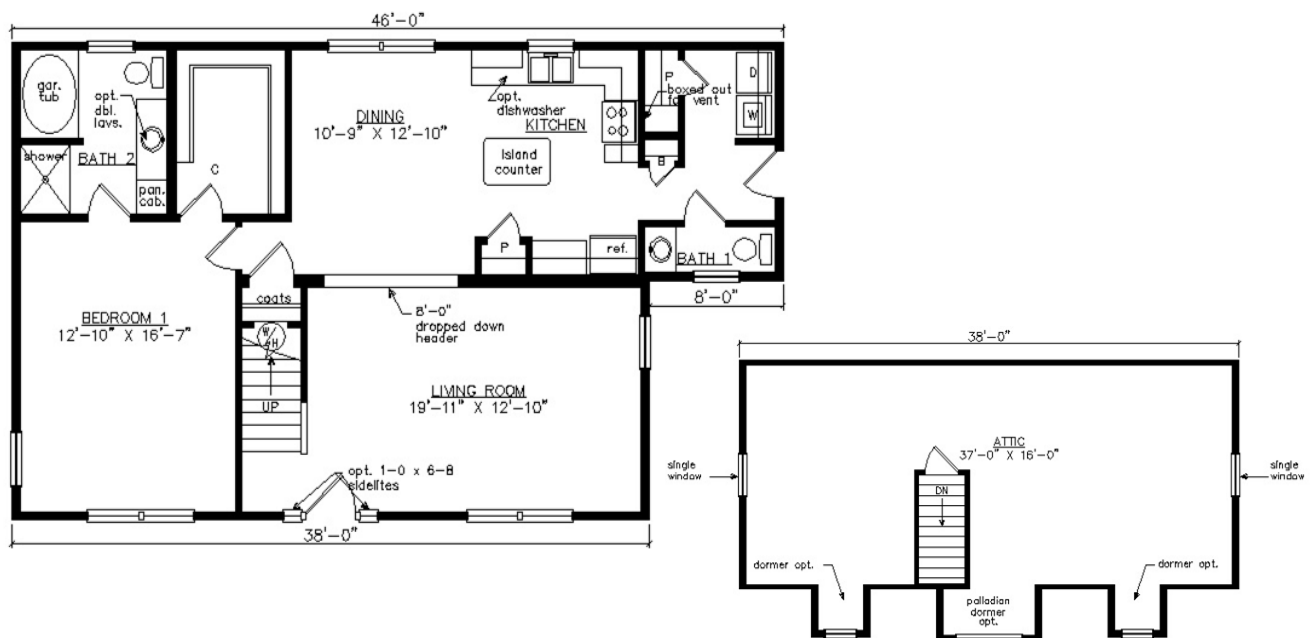
NORTHAMPTON CAPE

27'6" x 46'

1155 SQ. FT. (FINISHED) / 633 SQ. FT. (UNFINISHED)

BEDROOMS: 1 BATHS: 1.5

SHOWN WITH OPTIONAL PORCH,
FANLITE DOOR, DOOR SIDELITES AND DORMERS



Virginia Homes
Building Systems

www.virginiahomesbuildingsystems.com

A Division of Modular Building Systems of PA



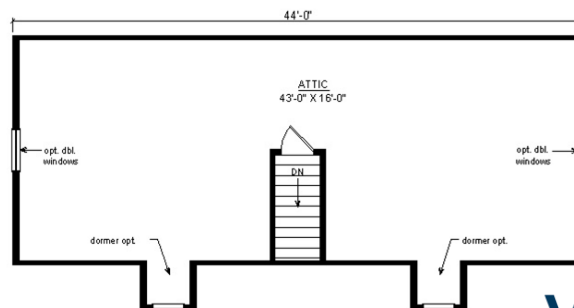
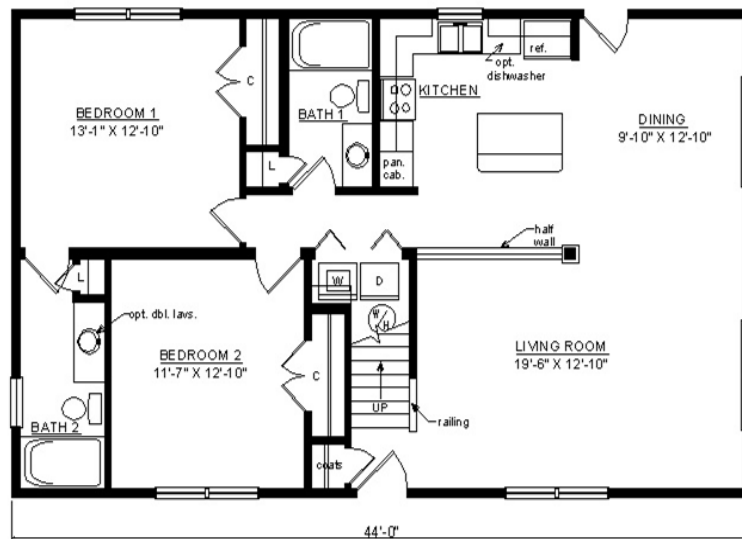
KINGSPORT CAPE

27'6" x 44'

1210 SQ. FT. (FINISHED) 733 SQ. FT. (UNFINISHED)

BEDROOMS: 2 BATHS: 2

SHOWN WITH OPTIONAL PORCH,
FANLITE DOOR AND DORMERS



Virginia Homes
Building Systems

www.virginiahomesbuildingsystems.com

A Division of Modular Building Systems of PA



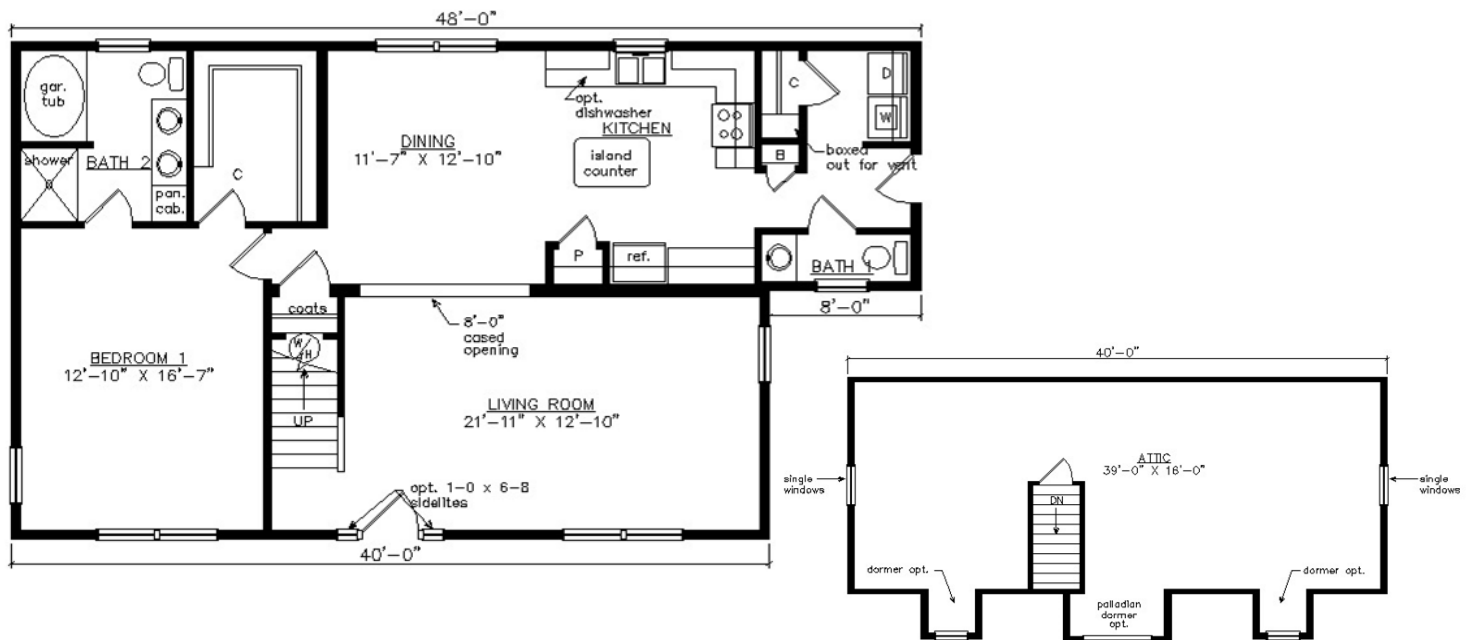
SOUTHAMPTON CAPE

27'6" x 48'

1210 SQ. FT. (FINISHED) / 667 SQ. FT. (UNFINISHED)

BEDROOMS: 1 BATHS: 1.5

SHOWN WITH OPTIONAL PORCH,
FANLITE DOOR, DOOR SIDELITES AND DORMERS



Virginia Homes
Building Systems

www.virginiahomesbuildingsystems.com

A Division of Modular Building Systems of PA



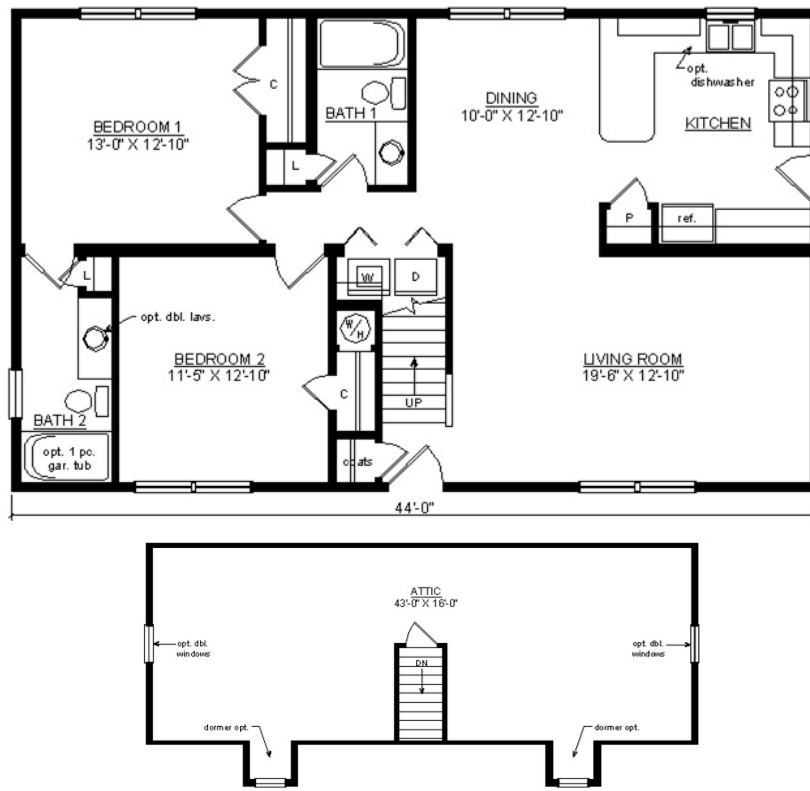
BAYPORT CAPE

27'6" x 44'

1210 SQ. FT. (FINISHED) / 704 SQ. FT. (UNFINISHED)

BEDROOMS: 2 BATHS: 2

SHOWN WITH OPTIONAL GABLE PORCH,
FANLITE DOOR AND DORMERS



Virginia Homes
Building Systems

www.virginiahomesbuildingsystems.com

A Division of Modular Building Systems of PA



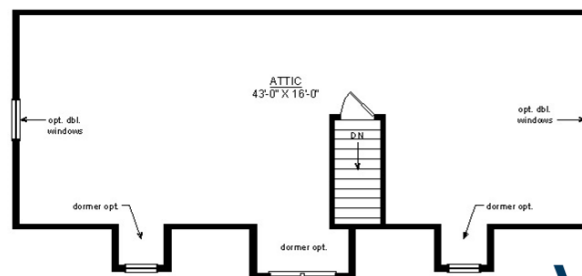
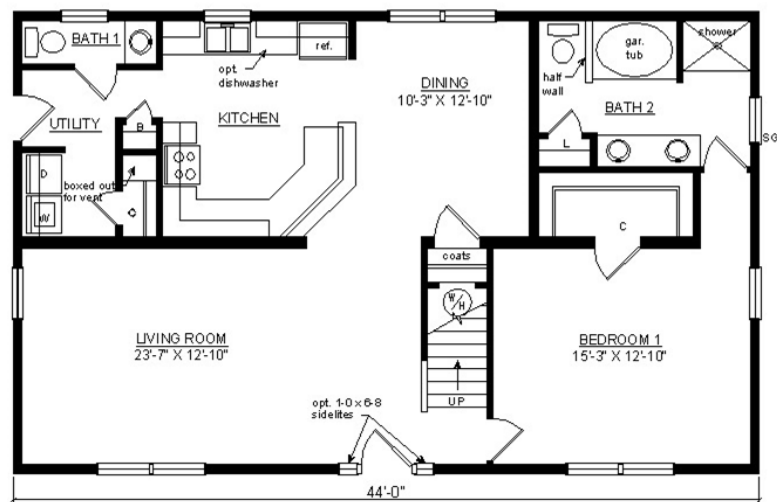
CHATHAM CAPE

27'6" x 44'

1210 SQ. FT. (FINISHED) / 704 SQ. FT. (UNFINISHED)

BEDROOMS: 1 BATHS: 1.5

SHOWN WITH OPTIONAL PORCH,
FANLITE DOOR AND DORMERS



Virginia Homes
Building Systems

www.virginiahomesbuildingsystems.com

A Division of Modular Building Systems of PA



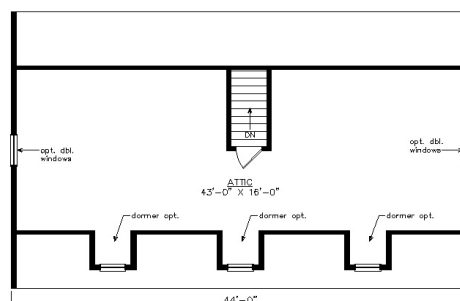
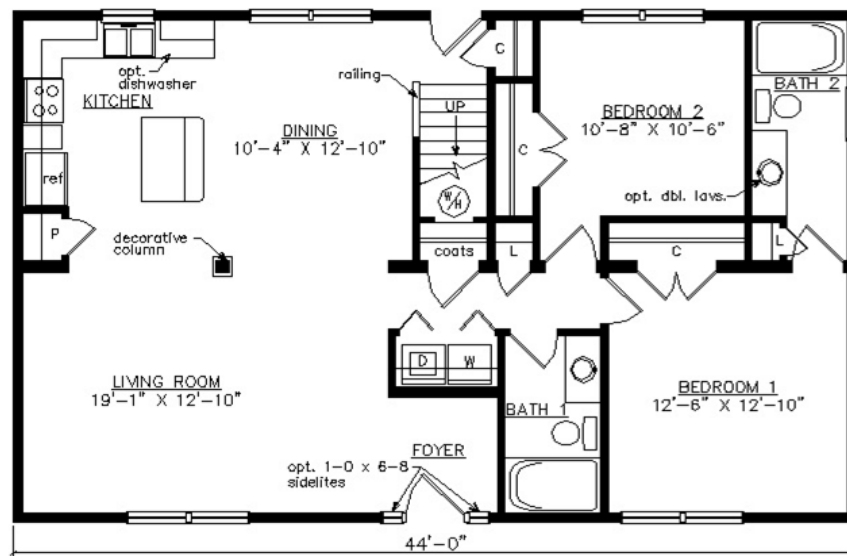
EASTPORT CAPE

27'6" x 44'

1210 SQ. FT. (FINISHED) / 704 SQ. FT. (UNFINISHED)

BEDROOMS: 2 BATHS: 2

SHOWN WITH OPTIONAL PORCH,
FANLITE DOOR AND DORMERS



Virginia Homes
Building Systems

www.virginiahomesbuildingsystems.com

A Division of Modular Building Systems of PA



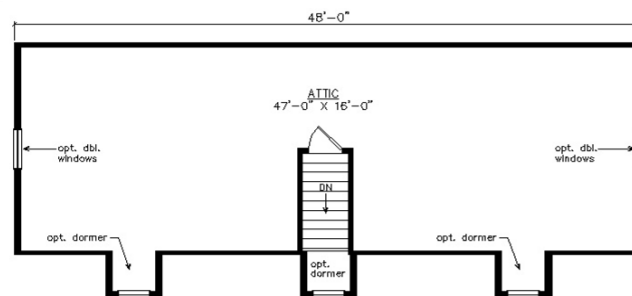
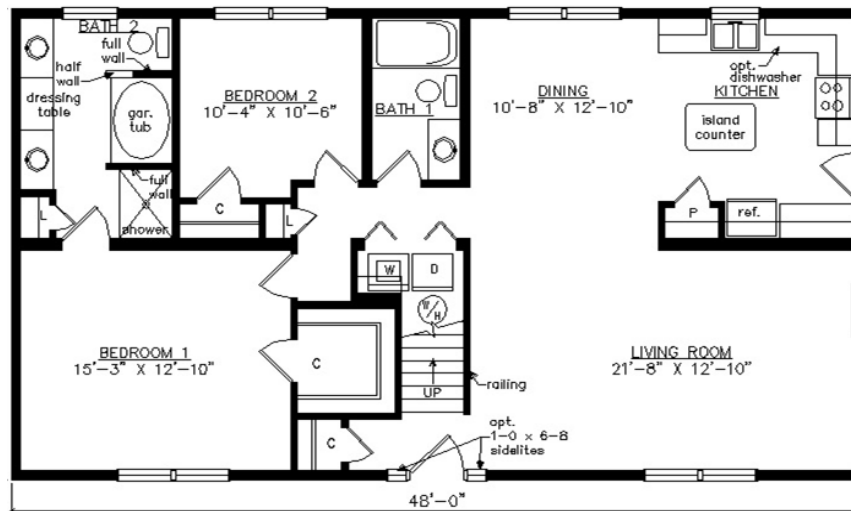
ROCKPORT CAPE

27'6" x 48'

1320 SQ. FT. (FINISHED) / 800 SQ. FT. (UNFINISHED)

BEDROOMS: 2 BATHS: 2

SHOWN WITH OPTIONAL PORCH, TRIANGLE GABLE VENTS,
FANLITE DOOR, DOOR SIDELITES AND DORMERS



Virginia Homes
Building Systems

www.virginiahomesbuildingsystems.com

A Division of Modular Building Systems of PA



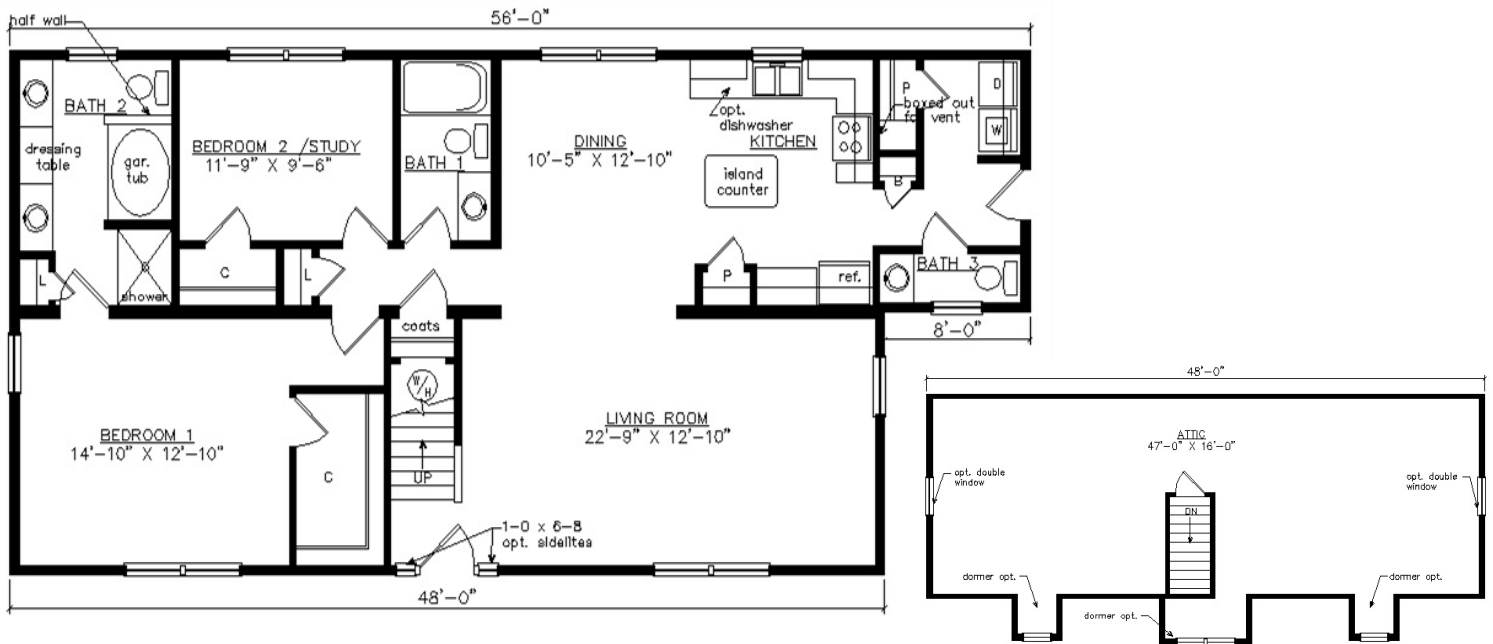
CAROLINA CAPE

27'6" x 56'

1430 SQ. FT. (FINISHED) / 800 SQ. FT. (UNFINISHED)

BEDROOMS: 2 BATHS: 2.5

SHOWN WITH OPTIONAL PORCH, FAN LITE DOOR,
DOOR SIDELITES AND DORMERS



Virginia Homes
Building Systems

www.virginiahomesbuildingsystems.com

A Division of Modular Building Systems of PA



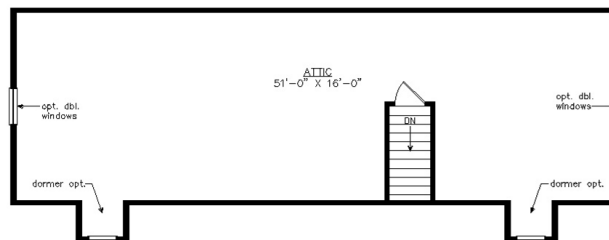
FIFTH AVENUE CAPE

27'6" X 52'

1430 SQ. FT. (FINISHED) / 832 SQ. FT. (UNFINISHED)

BEDROOMS: 3 BATHS: 2

SHOWN WITH OPTIONAL GABLE PORCH,
FANLITE DOOR WITH SIDELITES AND DORMERS



Virginia Homes
Building Systems

www.virginiahomesbuildingsystems.com

A Division of Modular Building Systems of PA



POWHATAN CAPE

27'6" x 54'

1457 SQ. FT. (FINISHED) / 877 SQ. FT. (UNFINISHED)

BEDROOMS: 1 BATHS: 1.5

SHOWN WITH OPTIONAL PORCH,
CRAFTSMAN DOOR AND DORMERS



Virginia Homes
Building Systems

www.virginiahomesbuildingsystems.com

A Division of Modular Building Systems of PA



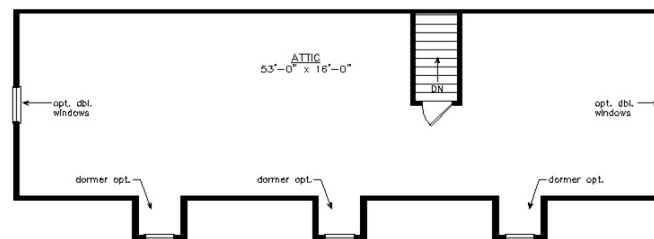
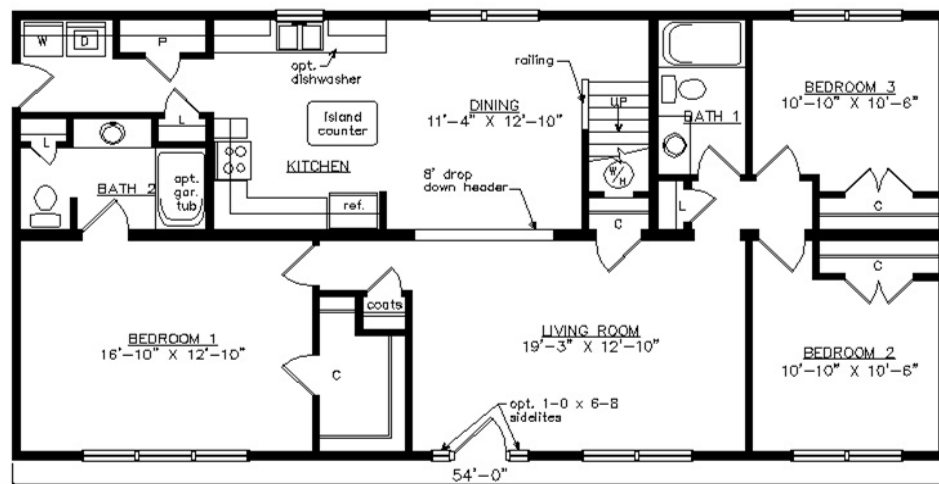
CAROLINE CAPE

27'6" x 54'

1485 SQ. FT. (FINISHED) / 896 SQ. FT. (UNFINISHED)

BEDROOMS: 3 BATHS: 2

SHOWN WITH OPTIONAL PORCH,
TRIANGLE GABLE VENT, FANLITE DOOR, DOOR SIDELITES AND DORMERS



Virginia Homes
Building Systems

www.virginiahomesbuildingsystems.com

A Division of Modular Building Systems of PA



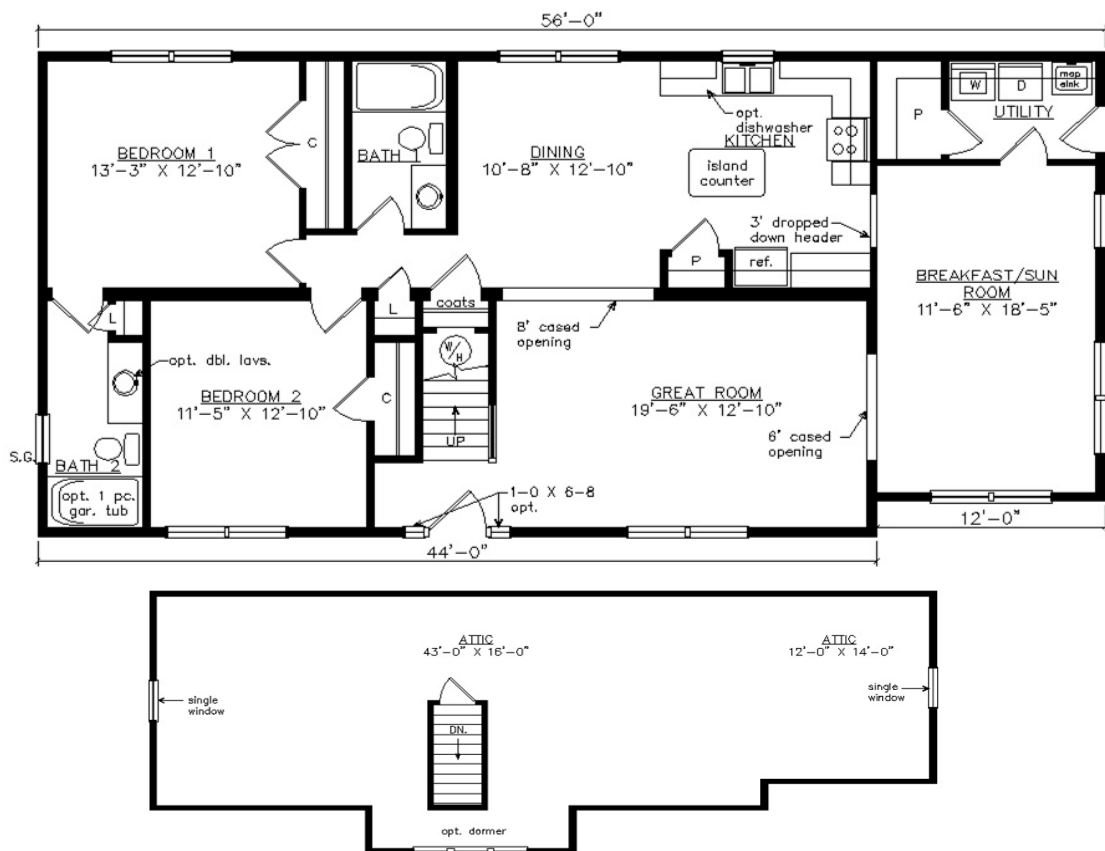
AMELIA CAPE

27'6" x 56'

1516 SQ. FT. (FINISHED) / 909 SQ. FT. (UNFINISHED)

BEDROOMS: 2 BATHS: 2

SHOWN WITH OPTIONAL PORCH, CRAFTSMAN DOOR,
DOOR SIDELITES AND SHED DORMER



Virginia Homes
Building Systems

www.virginiahomesbuildingsystems.com

A Division of Modular Building Systems of PA



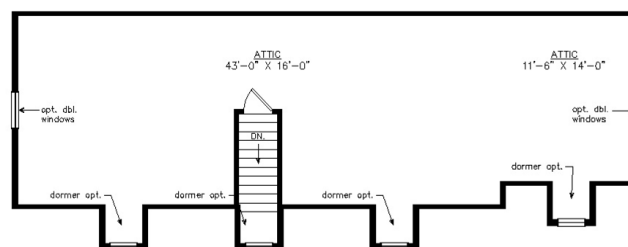
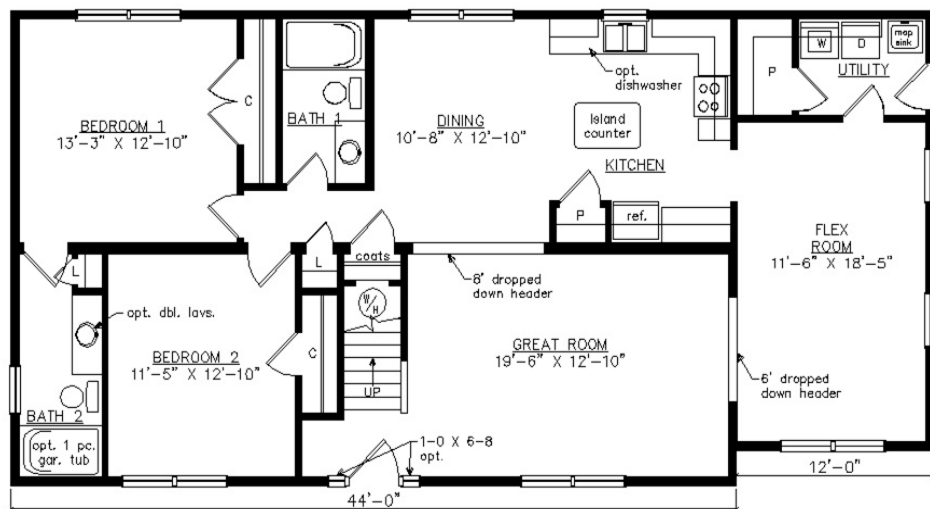
NEW HARBOR CAPE

27'6" x 56'

1516 SQ. FT. (FINISHED) 903 SQ. FT. (UNFINISHED)

BEDROOMS: 2 BATHS: 2

SHOWN WITH OPTIONAL ON SITE BUILT STOOP,
FANLITE DOOR, DOOR SIDELITES AND DORMERS



Virginia Homes
Building Systems

www.virginiahomesbuildingsystems.com

A Division of Modular Building Systems of PA



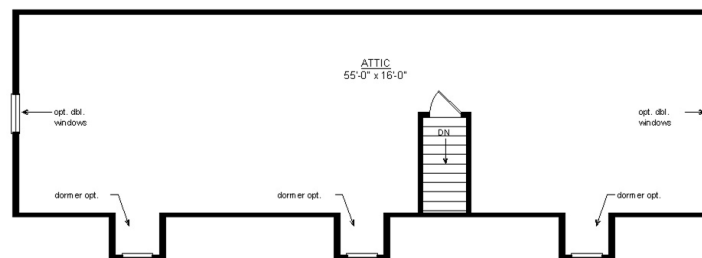
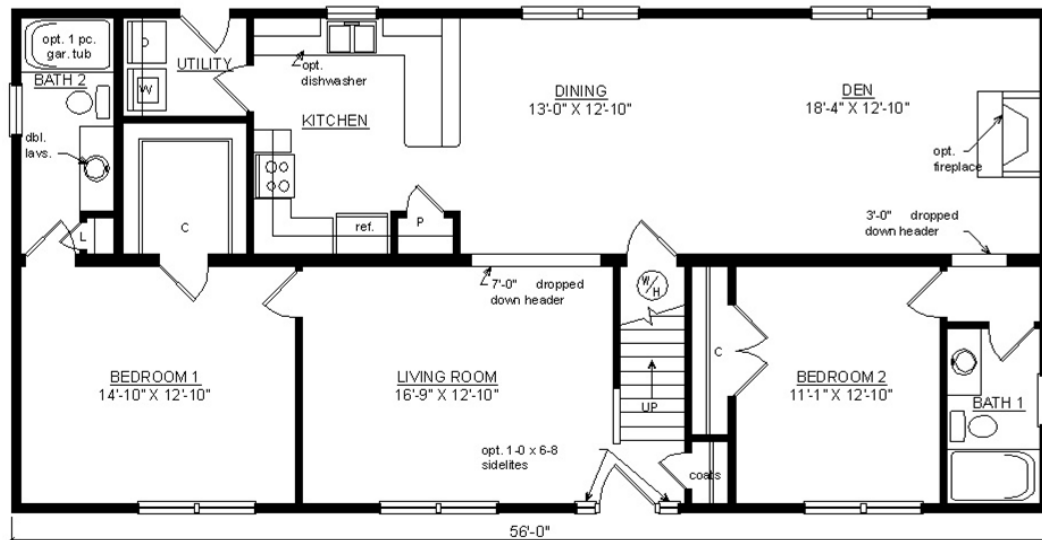
FREEPORT CAPE

27'6" x 56'

1540 SQ. FT. (FINISHED) / 896 SQ. FT. (UNFINISHED)

BEDROOMS: 2 BATHS: 2

SHOWN WITH OPTIONAL PORCH AND DORMERS



Virginia Homes
Building Systems

www.virginiahomesbuildingsystems.com

A Division of Modular Building Systems of PA



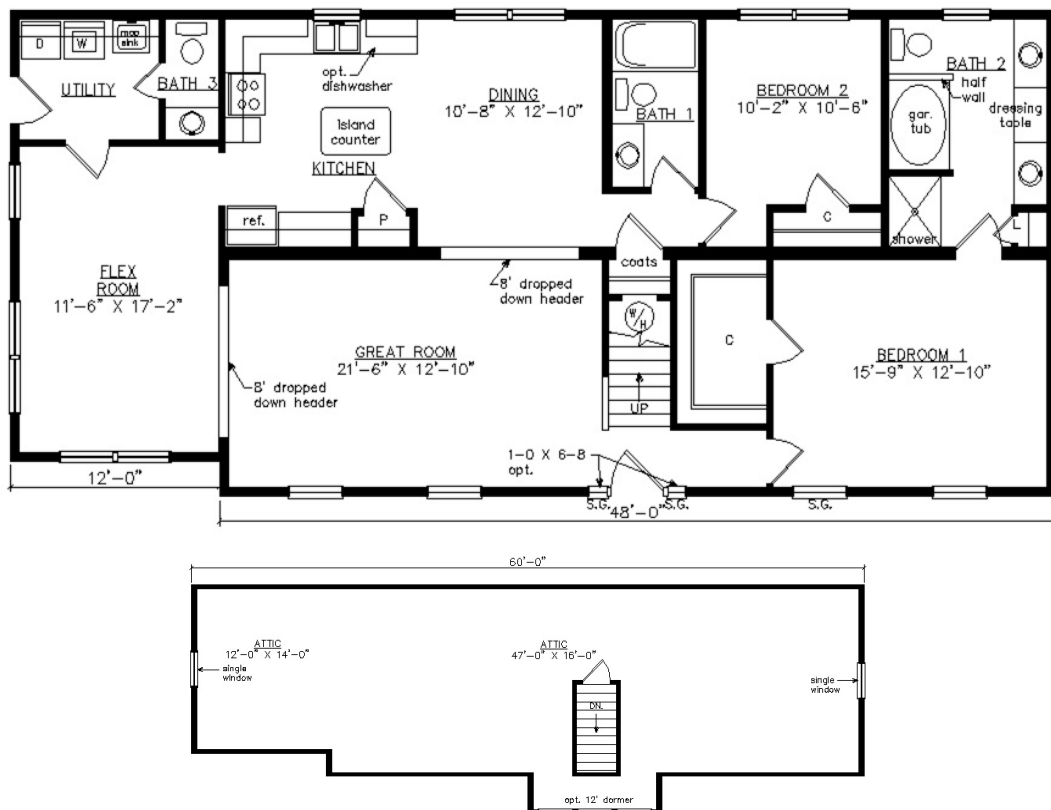
GOOCHLAND CAPE

27'6" x 60'

1626 SQ. FT. (FINISHED) 976 SQ. FT. / (UNFINISHED)

BEDROOMS: 2 BATHS: 2.5

SHOWN WITH OPTIONAL PORCH CRAFTSMAN DOOR
DOOR SIDELITES AND DORMER



Virginia Homes
Building Systems

www.virginiahomesbuildingsystems.com

A Division of Modular Building Systems of PA



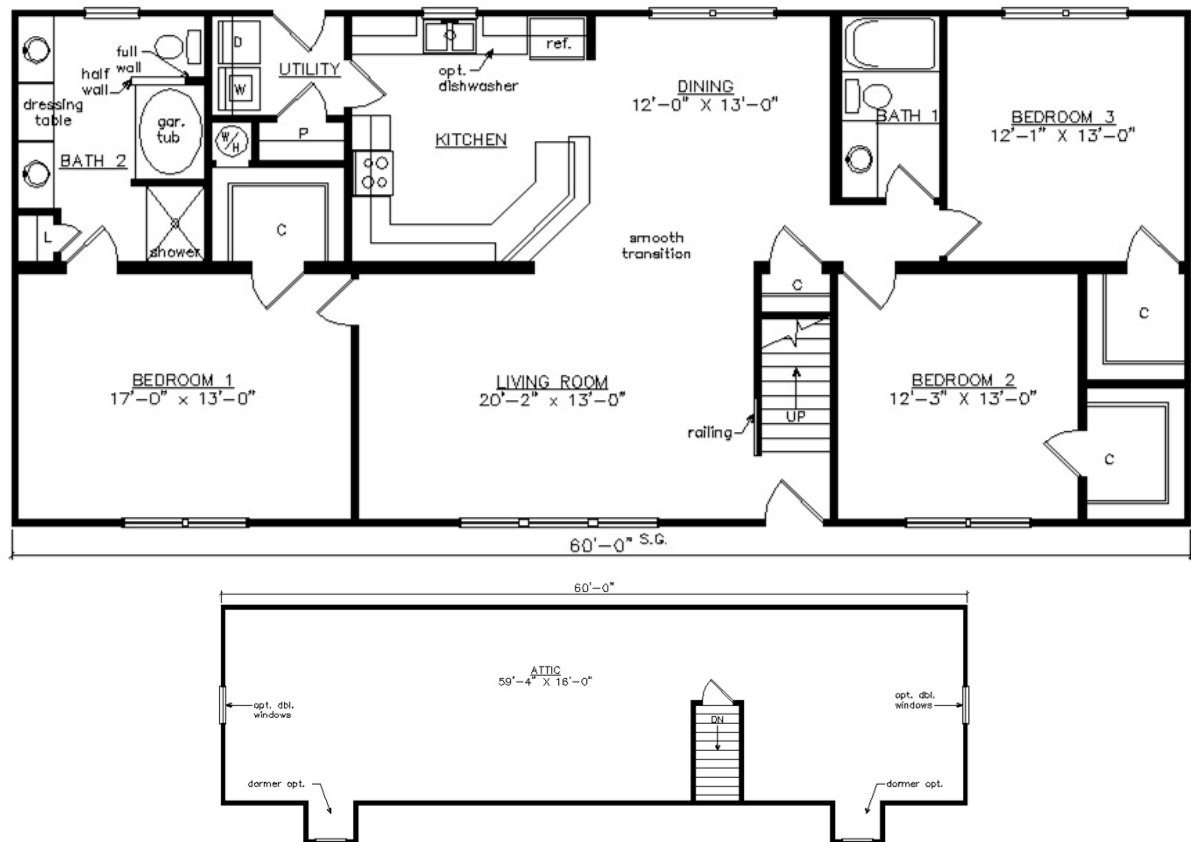
PARK AVENUE CAPE

27'6" x 60'

1650 SQ. FT. (FINISHED) / 1000 SQ. FT. (UNFINISHED)

BEDROOMS: 3 BATHS: 2

SHOWN WITH OPTIONAL PORCH,
DORMERS AND FANLITE DOOR



Virginia Homes
Building Systems

www.virginiahomesbuildingsystems.com

A Division of Modular Building Systems of PA



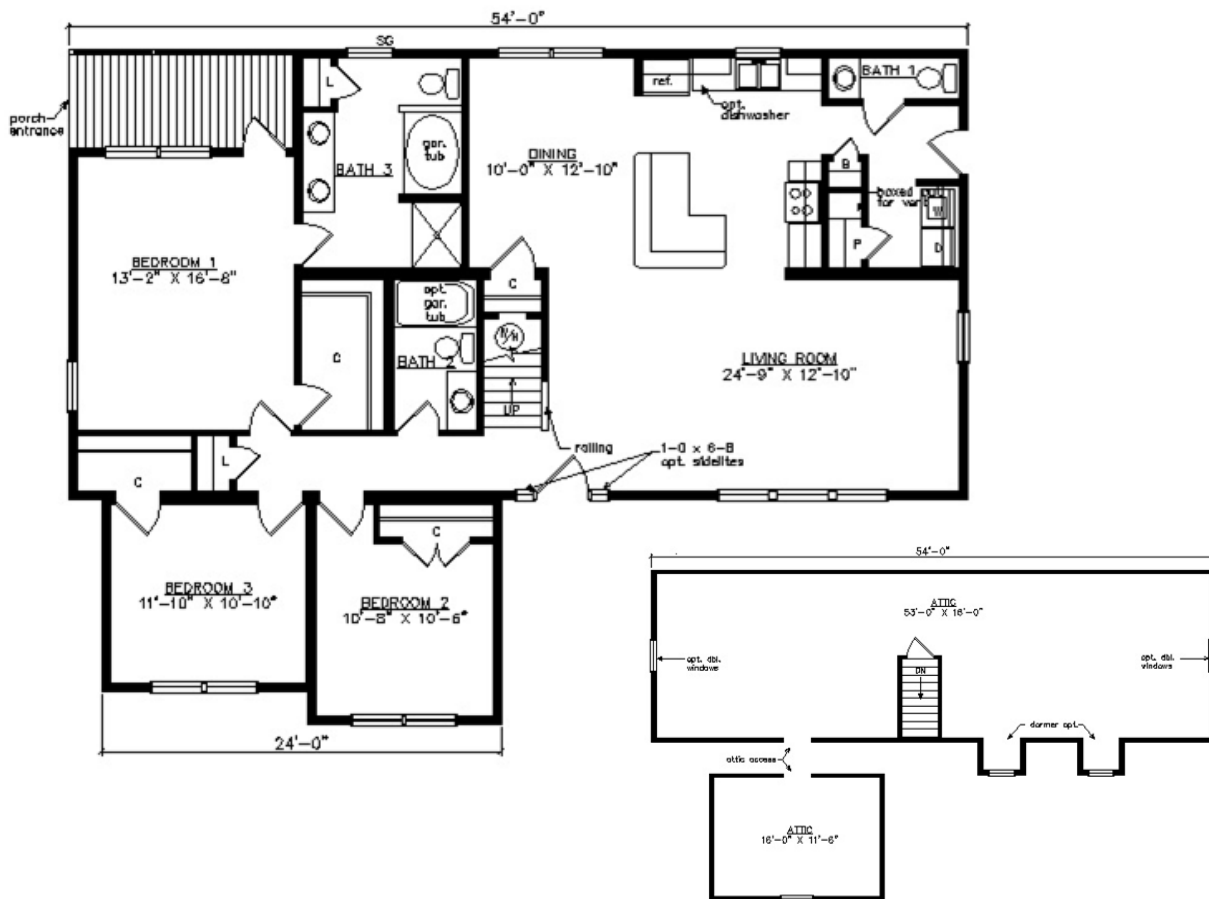
DINWIDDIE CAPE

41'3" x 54'

1708 SQ. FT. (FINISHED) / 1106 SQ. FT. (UNFINISHED)

BEDROOMS: 3 BATHS: 2.5

SHOWN WITH OPTIONAL PORCH,
FANLITE DOOR, DOOR SIDELITES, AND DORMERS



Virginia Homes
Building Systems

www.virginiahomesbuildingsystems.com

A Division of Modular Building Systems of PA



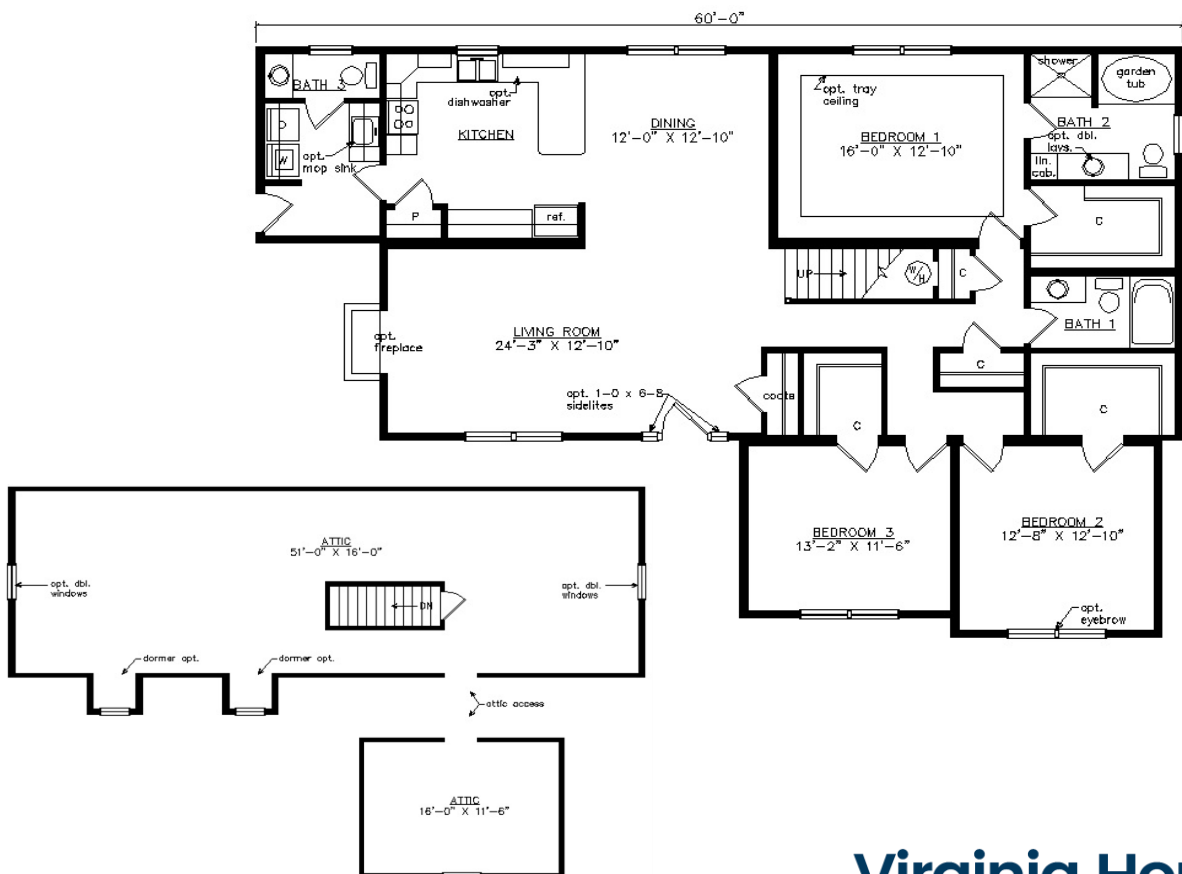
WILMINGTON CAPE

41' 3" x 60'

1891 SQ. FT. (FINISHED) / 1008 SQ. FT. (UNFINISHED)

BEDROOMS: 3 BATHS: 2.5

SHOWN WITH OPTIONAL PORCH, DOOR SIDELITES,
FANLITE DOOR AND DORMERS



Virginia Homes
Building Systems

www.virginiahomesbuildingsystems.com

A Division of Modular Building Systems of PA



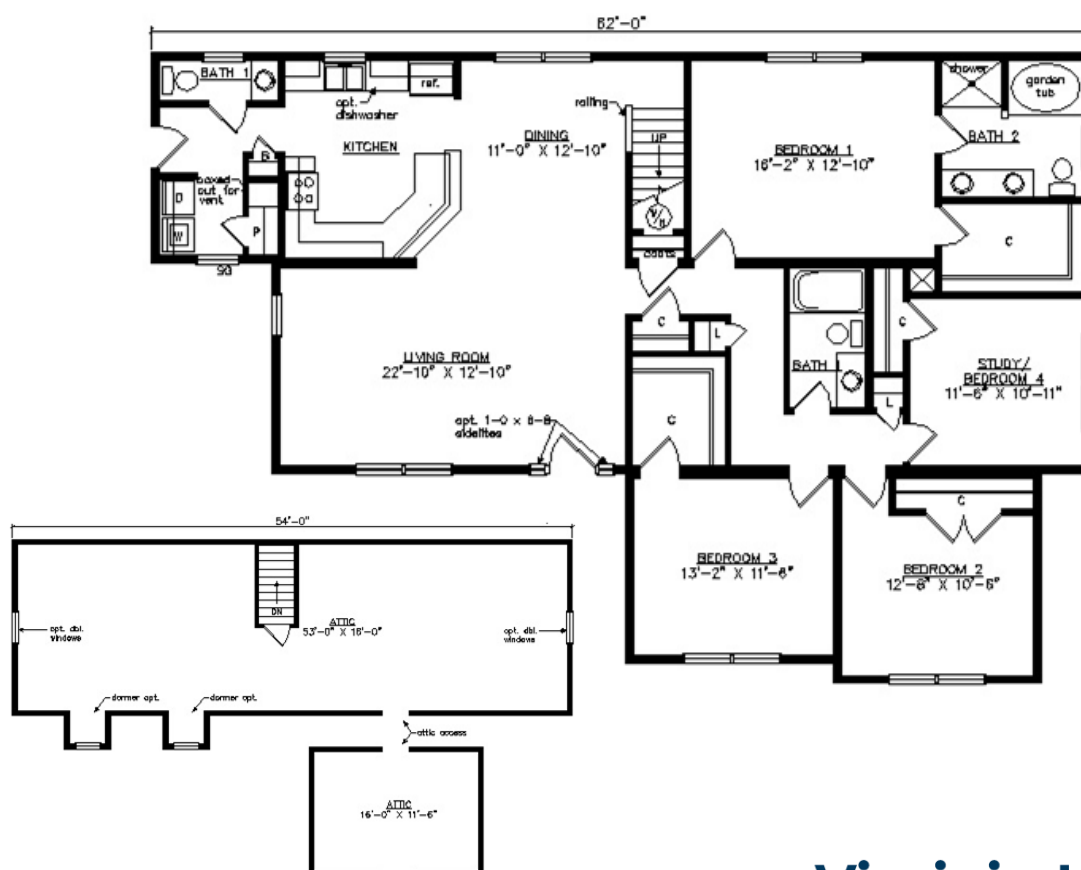
WILMINGTON I CAPE

41'3" x 62'

1946 SQ. FT. (FINISHED) / 1106 SQ. FT. (UNFINISHED)

BEDROOMS: 4 BATHS: 2.5

SHOWN WITH OPTIONAL PORCH, TRIANGLE GABLE VENT,
DOOR SIDELITES, FANLITE DOOR AND DORMERS



Virginia Homes
Building Systems

www.virginiahomesbuildingsystems.com

A Division of Modular Building Systems of PA



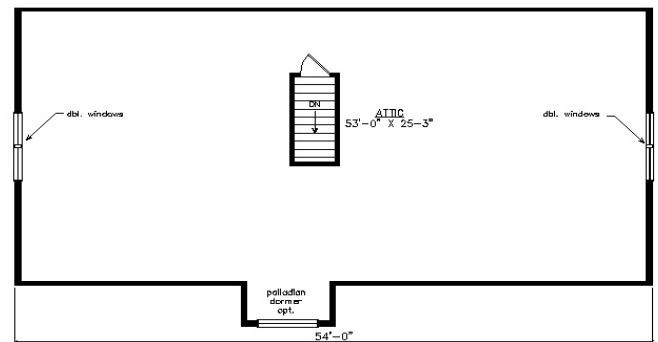
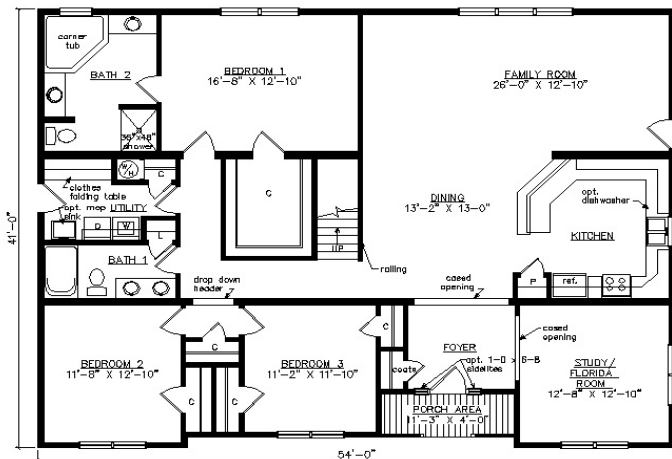
PORTSMOUTH CAPE

41'3" x 54'

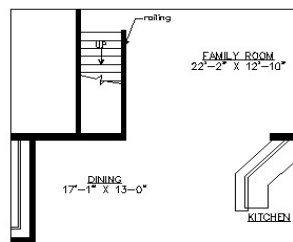
2143 SQ. FT. (FINISHED) / 1400 SQ. FT. (UNFINISHED)

BEDROOMS: 3 BATHS: 2

SHOWN WITH OPTIONAL FANLITE DOOR, DORMER AND TRIANGLE GABLE VENT



OPTION 2 (STAIR AREA)



Virginia Homes
Building Systems

www.virginiahomesbuildingsystems.com

A Division of Modular Building Systems of PA



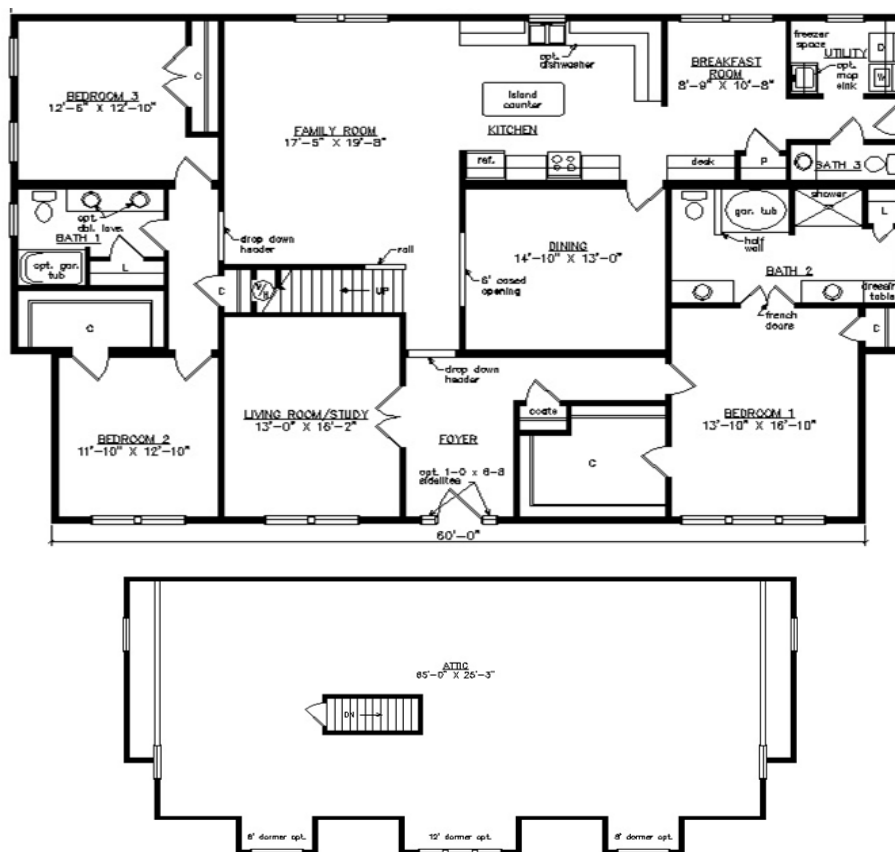
HAMPTON CAPE

41'3" x 66'

2640 SQ. FT. (FINISHED) / 1629 SQ. FT. (UNFINISHED)

BEDROOMS: 3 BATHS: 2.5

SHOWN WITH OPTIONAL PORCH, FANLITE DOOR AND DORMER



Virginia Homes
Building Systems

www.virginiahomesbuildingsystems.com

A Division of Modular Building Systems of PA